



Apprenticeship

RHODE ISLAND

Funds for Registered Apprenticeship

Workforce Development Funds

Apprenticeship Planning Grants are awarded competitively by the Governor's Workforce Board (GWB) to employers, employer associations, and/ or their educational partners to design and launch Apprenticeships in high demand fields beyond the building trades.

Non-Trade Apprenticeship Incentive Program GWB offers \$1000 per non-trade apprentice after the probationary period up to \$5000 per employer per year.

Incumbent Worker Training Grants up to \$30,000 matching funds for up to 12 months.

Customized Training Contracts (also known as OJT contracts) can reimburse up to 50% of the apprentice training costs for new hires up for six months.

Corporate Tax Credit

Machine Tool / Plastics Process Apprenticeship Credit against Business Corporations Tax- up to \$4,800 per qualifying Apprentice as long as the apprenticeship program is in an eligible occupation and growing. (See Form RI-2874)

Support for Target Populations

Veterans: GI Bill benefits can be used towards Apprenticeships.

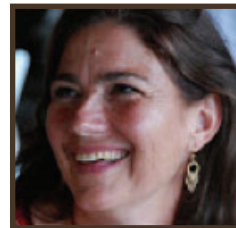
WIOA-eligible job seekers can tap Individual Training Accounts to pay for instruction within an Apprenticeship.

Federal Student Aid. Pell Grants can cover all or most tuition and fees, books and supplies for the students' enrollment in the instruction portion of an Apprenticeship if part of an eligible academic program. Colleges can use Federal Work Study funds to pay up to 50% of the training wages of eligible students who are apprentices.



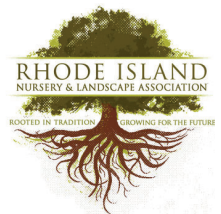
Scott Jenson, Director
RI Department of Labor and Training

Registered Apprenticeships have a high return on investment and Real Jobs RI is helping support these employer-based solutions to workforce challenges.



Shannon Brawly, Executive Director
RINLA

Funding from the GWB Planning Grant allowed us to realize our dreams into a strategic vision and business plan that is the basis for our emerging Apprenticeship program. Without both the technical assistance from Apprenticeship RI and the investment from the State, we would not be as far along as we are today—and the investment has allowed us to leverage additional dollars.



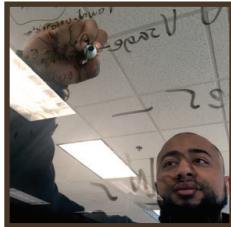
Rhode Island has a number of financial resources dedicated to help your business create, design, and implement a high quality Registered Apprenticeship.



Aegis Program for Manufacturers

We Make RI has been able to use the Apprenticeship RI grant to pick up training where our other sources of funding stops - at the employer's door. Now our apprentice program can support employees from career inspiration to career success and employers from the time they identify a need until all the hires, back-fills, and on-the-job training has been successfully completed.

Barbara Jackson, Executive Director, We Make RI, www.WeMakeRI.com



Veterans in a Registered Apprenticeship can use their GI Bill benefits

Before this apprenticeship I had done IT work in the Marine Corps. The Carousel apprenticeship is my way to get my feet back in the IT world and become a Network Engineer. I've been able to earn several IT certification since starting at Carousel including the VMWare VCP certification.

Amilcar Silva, Apprentice Network Engineer, Carousel Industries



Return on Investment

Results are more than anecdotal...the department saw a lower bill hold last quarter...our results show more cross-functional work between coders.

Women and Infants Hospital



What We Do

Apprenticeship RI provides technical assistance to employers and sponsors to design, register, and launch Apprenticeship programs to develop key talent in their organizations.

We assist Rhode Island employers, at no cost with:

- **Designing** your Apprenticeship program.
- **Registering** your Apprenticeship
- **Maximizing** state and federal financial benefits
- **Connecting** with other employers and partners
- **Leveraging** national Apprenticeship initiatives for RI

Let us Help You

Apprenticeship RI
Lori.turchetta@dlt.ri.gov | 401 919 5919 x 215
ApprenticeshipRI.org